

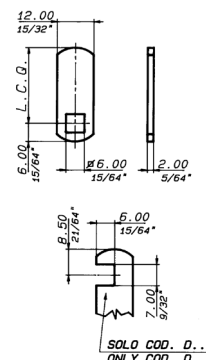
# 21LEVA51

# LEVETTE PER SERRATURE UNIVERSALI CAMs FOR CAM LOCKS

SERIE

O

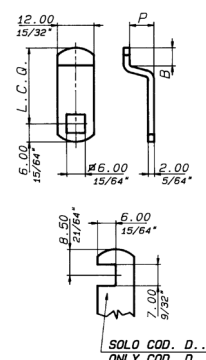
Codice Item	Piane - Flat			
	L.C.Q.		Peso/Weight	
	mm	inch	g (*)	ozs (*)
C0	34	1 11/32"	649	22,89
C013	13	33/64"	258	9,10
C015	14,5	37/64"	288	10,16
C021	21	53/64"	412	14,53
C025	25	63/64"	485	17,11
C027	27	1 1/16"	524	18,48
C031	30,5	1 13/64"	582	20,53
C040	40	1 37/64"	763	26,91
D0	34	1 11/32"	582	20,53
E010	9,5	3/8"	180	6,34
E012	11,5	29/64"	217	7,65
E016	16	5/8"	302	10,65
E020	19,5	49/64"	368	12,98



Levetta in ferro galvanizzato      Iron galvanized cam

(\*) Peso di 1 pz      (\*) Weight of 1's

Codice Item	Piegate - Bent							
	P		B		L.C.Q.		Peso/Weigh	
	mm	inch	mm	inch	mm	inch	g (*)	ozs (*)
C3	3	1/8	15	19/32"	34	1 11/32"	656	23,13
C4527	4,5	11/64"	8	5/16"	27	1 1/16"	518	18,27
C5	5	13/64"	15	19/32"	34	1 11/32"	694	24,47
C522	5	13/64"	2,5	3/32"	22	55/64"	453	15,97
C532	5	13/64"	11	7/16"	32	17/64"	638	22,50
C6	6	15/64"	15	19/32"	34	1 11/32"	681	24,02
C823	8	5/16"	4	5/32"	23	29/32"	522	18,41
C825	8	5/16"	6	15/64"	25	63/64"	559	19,71
C836	8	5/16"	17	43/64"	35,5	1 3/8"	757	26,70
C10	10	25/64"	15	19/32"	34	1 11/32"	769	27,12
C1022	10	25/64"	2,5	3/32"	22	55/64"	522	18,41
C12526	12,5	31/64"	7,5	19/64"	26	1 1/32"	629	22,18
C15	15	19/32"	15	19/32"	34	1 11/32"	812	28,64
D5	5	13/64"	15	19/32"	34	1 11/32"	627	22,11
D10	10	25/64"	15	19/32"	34	1 11/32"	702	24,76
D15	15	19/32"	15	19/32"	34	1 11/32"	745	26,27
E4516	4,5	11/64"	5	13/64"	16	5/8"	333	11,74
E4520	4,5	11/64"	5	13/64"	19,5	49/64"	398	14,03



Levetta in ferro galvanizzato      Iron galvanized cam

(\*) Peso di 1 pz      (\*) Weight of 1's

